



HORSEPLAYER

USER GUIDE





WELCOME TO HORSEPLAYER INTERACTIVE

**Everything you need to place
your next wager – by phone or
online with HPIBET.com – is now
at your fingertips!**

We're here to help and easy to reach!

For account information: Toll Free: 1-888-675-8886
Local: 416-675-8886

Telephone wagering: Toll Free: 1-888-675-BETS
Local: 416-675-BETS

Online wagering: www.HorsePlayerInteractive.com

By fax: 416-213-2130

By email: hpi@WoodbineEntertainment.com

Report all lost Account Cards immediately by calling 1-888/416-675-8886. Replacement cards will be issued within 24 hours. All lost cards are subject to a \$5 replacement fee.

WHAT YOU'LL NEED WHEN YOU CALL 1-888-675-BETS (OR 416-675-BETS IN THE 416/905 AREA)

YOUR ACCOUNT NUMBER



YOUR PIN NUMBER



It is recommended that you allow yourself ample time to place your wagers (i.e. 10 minutes to post) until you are familiar with the automated system. For big racing events, please wager early.

Wagering on the telephone betting system is available approximately one half hour prior to post-time.

To hear the latest odds, results, scratches and changes, call 1-888-675-ODDS or locally 416-623-6337 or visit our web site at: www.HorsePlayerInteractive.com.

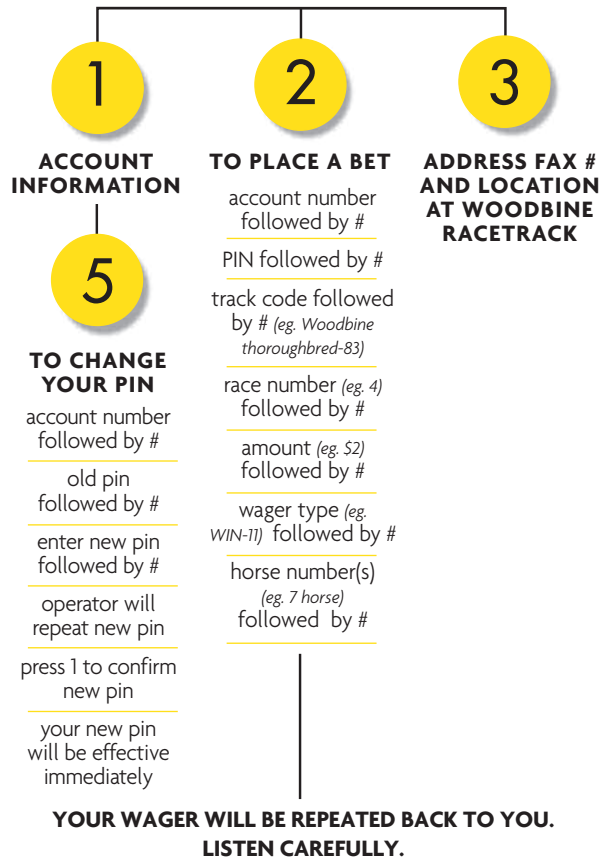
NEED PERSONAL ASSISTANCE?

To speak to a HorsePlayer Representative at any time press "0". However, please note that HorsePlayer Representatives are not authorized to accept wagers.



TELEPHONE ACCOUNT BETTING USER GUIDE 1-888/416-675-2387 (BETS)

THE MAIN MENU



Upon pressing 1 you will hear "Your wager has been confirmed. You now have an available balance of \$." You must listen for this confirmation. To continue wagering on the same track and same race, press 1. To wager on a different track or race press 2.

HELPFUL HINTS

- End all entries on the betting menu with..... #
- To hear a menu again..... 8
- To return to the previous menu..... #
- To return to the main menu..... 9
- To keep wagering on the same track and same race..... 1
- To wager on a different track or race..... 2
- When placing your wager, pressing the # key will back you up one step..... #

Forgotten a code?

- To hear the track codes, wager type codes, races or runners automated listings. * #
- Or call 416-623-6337 or 1-888-675-6337

For your security

You MUST change your PIN on the automated telephone system upon activation of your account. From the Main Menu press 1, you will hear 5 options, then press 5 to change your PIN (Enter old PIN when prompted THEN enter new PIN).

- All Runners..... 9 9

Need to cancel a wager placed via the telephone system?

Call 1-888/416-675-8886 and speak to a HorsePlayer Representative. Every effort will be made to accommodate cancellations before post-time. However, we cannot guarantee cancellations.

EXAMPLES

HOW TO ENTER YOUR EXOTIC WAGERS

- * = "and" to separate runners
- ** = "with" to separate legs and/or races in an Exactor, Triactor, Daily Double, Pick 3, Pick 4 or Pick 7.

WIN

Woodbine Harness (84#), Race 3 (3#), \$10 (10#), Win (11#), horse number 4 (4#)

SHOW

Balmoral Park (69#), Race 7 (7#), \$2 (2#), Show (13#), horse number 9 (9#)

EXACTOR

Santa Anita (18#), Race 1 (1#), \$2 (2#), Exactor (21#), horse numbers 4 with 8, 9 and 11 (4**8*9*11#)

EXACTOR BOX

Woodbine Thoroughbred (83#), Race 9 (9#), \$1 (1#), Exactor Box (22#), horse numbers 1, 3, 6 (1*3*6#)

TRIACTOR

flamboro downs (95#), Race 2 (2#), \$2 (2#), Triactor (31#), horse numbers 2 with 3 with 9 (2**3**9#)

TRIACTOR KEY

Meadowlands (25#), Race 5 (5#), \$2 (2#), Triactor (31#), horse numbers 2 with 3, 9 with ALL (2**3*9**99#)

TRIACTOR BOX

Gulfstream (16#), Race 1 (1#), \$1 (1#), Triactor Box (32#), horse numbers 6, 7, 8 (6*7*8#)

SUPERFECTA

Aqueduct (11#), Race 2 (2#), \$2 (2#), Superfecta (41#), horse numbers 1 with 2 with 5 with 7 (1**2**5**7#)

PICK 6

Turfway (38#), Race 6 (6#), \$2 (2#), Pick 6 (66#), horse numbers 1 with 4 with 7 with 8 with 9 with 11 (1**4**7**8**9**11#)

HORSEPLAYER INTERACTIVE CODES

HORSEPLAYER INTERACTIVE CODES

THOROUGHBRED TRACK CODES

Aqueduct.....11	Kin-Park.....128
Arlington.....39	Laurel.....34
Assiniboia.....41	Lone Star.....57
Australia-A.....89	Los Alamitos.....68
Australia-B.....90	Louisiana Downs.....456
Bay Meadows.....23	Meadowlands.....125
Belmont.....12	Monmouth Park.....31
Calder.....15	Mountaineer.....75
Canterbury Park.....107	New Zealand.....130
Charles Town.....480	Northlands.....431
Churchill Downs.....37	NTRA Pick 4.....377
Colonial Downs.....111	Oaklawn Park.....132
Del Mar.....22	Penn National.....32
Delaware.....65	Philadelphia Park.....33
Delta Downs.....423	Pimlico.....35
Derby Oaks Futures.....286	Pimlico Grade 1 Double.....342
Dubai.....158	Prairie Meadows.....73
Ellis Park.....360	River Downs.....347
Emerald Downs.....276	Sam Houston.....20
Evangeline Downs.....494	Santa Anita.....18
Fair Grounds.....48	Saratoga.....13
Fairplex.....21	South Africa.....101
Finger Lakes.....86	Stampede Park.....91
Fort Erie.....92	Suffolk Downs.....435
France.....161	Sunland Park.....100
Golden Gate.....24	Tampa Bay.....72
Gulfstream.....16	Thistle Down.....108
Hastings Racecourse.....51	Turf Paradise.....47
Hawthorne.....29	Turfway Park.....38
Hollywood Park.....19	Whoop Up.....166
Hong Kong.....93	Woodbine.....83
Hoosier.....81	Yavapai Downs.....496
Japan.....102	Advance Woodbine.....183
Keeneland.....36	Advance Simulcasting.....339

HARNESS TRACK CODES

Aylmer.....159	Mohawk.....85
Balmoral Park.....69	Montreal.....96
Cal Expo.....79	Northfield.....52
Clinton.....110	Northlands.....429
Delaware.....97	Ocean Downs.....449
Dover Downs.....74	Plainridge.....67
Evergreen Harness.....163	Pompano.....157
flamboro downs.....95	Quebec City.....383
France.....119	Red Mile.....66
Fraser Downs.....46	Rideau Carleton.....98
Freehold.....463	Rosecroft.....281
Georgian Downs.....10	Sagebush.....143
Grand River Raceway.....94	Sandown Park.....82
Harrah's Chester.....491	Stampede Park.....191
Harrington.....70	The Meadows.....56
Hawthorne.....129	Tioga Downs.....495
Hazel Park.....156	Trois Rivieres.....150
Hiawatha.....53	Western Fair.....44
Hoosier.....181	Whoop Up.....165
Kawartha.....63	Windsor.....99
Lil Brown Jug Futures.....370	Woodbine.....84
Maywood.....30	Yonkers.....162
Meadowlands.....25	Advance Mohawk.....185
Millarville.....164	Advance Woodbine.....184

WAGER TYPE CODES

Win.....11	Superfecta.....41
Place.....12	Superfecta Box.....42
Show.....13	Super High 5.....51
Win, Place.....14	Super High 5 Box.....52
Win, Show.....15	Grand Slam.....54
Win, Place, Show.....16	Pick 3.....63
Place, Show.....17	Pick 4.....64
Exactor.....21	Pick 5.....65
Exactor Box.....22	Pick 6.....66
Quinella.....23	Pick 7.....67
Quinella Box.....24	Pick 8.....68
Daily Double.....25	Pick 9.....69
Triactor.....31	Pick 10.....70
Triactor Box.....32	All Runners.....99

IVR codes are subject to change without notice. Please visit www.HorsePlayerInteractive.com or call 1-888/416-675-8886 for updated codes.

*separate runners **separate legs

HORSEPLAYER INTERACTIVE CODES BC AREA ACCOUNT HOLDERS

B.C. THOROUGHBRED TRACK CODES

Aqueduct	249	Lousiana Downs	389
Arlington	192	Meadowlands	468
Assiniboia	14	Monmouth Park	459
Australia-A	489	Mountaineer	264
Australia-B	490	New Zealand	130
Bay Meadows	419	Northlands	432
Belmont	245	NTRA Pick 4	378
Beulah	272	Oaklawn	277
Calder	477	Penn National	352
Canterbury Park	365	Philadelphia Park	300
Charles Town	481	Pimlico	312
Churchill Downs	241	Pimlico Grade 1 Double	343
Colonial Downs	356	Pleasanton	448
Del Mar	407	Portland	392
Delaware	327	Prairie Meadows	323
Delta Downs	424	Remington	393
Derby Oaks Futures	287	Retama Park	476
Dubai	273	River Downs	348
Ellis Park	361	Sam Houston	260
Emerald Downs	54	San Mateo	455
Evangeline Downs	492	Santa Anita	403
Fair Grounds	268	Santa Rosa	454
Fairplex	411	Saratoga	373
Finger Lakes	319	South Africa	216
Fort Erie	88	Stampede Park	91
France	161	Stockton	447
Golden Gate	399	Suffolk Downs	436
Gulfstream	479	Sunland Park	100
Hastings Racecourse	51	Tampa Bay Downs	478
Hawthorne	204	Thistle Down	390
Hollywood Park	415	Turf Paradise	292
Hong Kong	493	Turfway Park	256
Hoosier	335	Vallejo	451
Japan	253	Whoop Up	166
Keeneland	233	Woodbine	483
Kin-Park	128	Yavapai Downs	446
Laurel	308	Advance Woodbine	283
Lone Star	304	Advance Simulcast	340
Los Alamitos	68		

IVR codes are subject to change without notice. Please visit www.HorsePlayerInteractive.com or call 1-888/416-675-8886 for updated codes.

HORSEPLAYER INTERACTIVE CODES BC AREA ACCOUNT HOLDERS

B.C. HARNESS TRACK CODES

Aylmer	58	Montreal	43
Balmoral Park	196	Northfield	212
Cal Expo	296	Northlands	430
Clinton	110	Northville Downs	428
Delaware	228	Oceans Downs	449
Dover Downs	237	Plainridge	67
Evergreen Harness	163	Pompano	42
flamboro downs	95	Quebec City	61
France	119	Red Mile	220
Fraser Downs	46	Rideau Carleton	55
Freehold	464	Rosecroft	282
Georgian Downs	10	Sagebush	143
Grand River Raceway	94	Sandown	82
Harrah's Chester	391	Stampede Park	191
Harrington	224	The Meadows	316
Hawthorne	200	Tioga Downs	444
Hazel Park	80	Trois Rivieres	50
Hiawatha	60	Vernon Downs	442
Hoosier	331	Western Fair	59
Kawartha	62	Whoop Up	165
Lil Brown Jug Futures	371	Windsor	17
Maywood	208	Woodbine	484
Meadowlands	472	Yonkers	394
Millarville	164	Advance Mohawk	285
Mohawk	485	Advance Woodbine	284

WAGER TYPE CODES

Win	11	Superfecta	41
Place	12	Superfecta Box	42
Show	13	Super High 5	51
Win, Place	14	Super High 5 Box	52
Win, Show	15	Grand Slam	54
Win, Place, Show	16	Pick 3	63
Place, Show	17	Pick 4	64
Exactor	21	Pick 5	65
Exactor Box	22	Pick 6	66
Quinella	23	Pick 7	67
Quinella Box	24	Pick 8	68
Daily Double	25	Pick 9	69
Triactor	31	Pick 10	70
Triactor Box	32	All Runners	99

*separate runners **separate legs

AT A SELF-SERVE TERMINAL*



Wager from your account, review wagers, deposit or withdraw funds, change your PIN # and review results and prices from the current and previous days races.

- STEP 1** Insert and slide your Account Card downward in the card reader with the mag stripe facing away from you or place your account card on the “Tap Here” sticker (RFID).
- STEP 2** Enter your PIN #.
- STEP 3** Follow the screen prompts to place a wager or use a voucher/winning ticket or cash to deposit to or withdraw from your account.

AT A PERSONAL WAGERING DEVICE*



Wager from your account and review wagers.

- STEP 1** Touch the screen and enter your Account # and PIN #.
- STEP 2** Follow the screen prompts to place a wager or review your bets.
- STEP 3** Press the “make bet” button to confirm your wager.

- Admission charges may apply at non-GTA Teletheatres. Withdrawals exceeding \$1000 cannot be accommodated at Champions Teletheatres, or exceeding \$800 at B.C. area Teletheatres.
- Bets placed through a self-serve terminal or personal wagering device can be cancelled at any self-serve terminal or personal wagering device as per CPMA regulations.
- This is a paperless transaction (you will not be issued a ticket for wagers placed via your account).

*Machines may vary by location

WIRELESS



Make a bet anywhere on-track at Woodbine with Wireless Wagering.

You can use your Pocket PC or laptop to place a wager from anywhere on-track at Woodbine without ever having to stand in line. Any spot can be your lucky spot!

Wager from the paddock, the grandstand or even in the food court. If you'd like to borrow one of our Pocket PCs for the day, just visit the HPI Player Services desk on the second floor at Woodbine and find out how.



WELCOME TO CANADA'S FIRST AND ONLY ONLINE WAGERING SERVICE



Log on to HPIBET.com

Simply enter your account information and you can begin betting immediately through your HPI account.

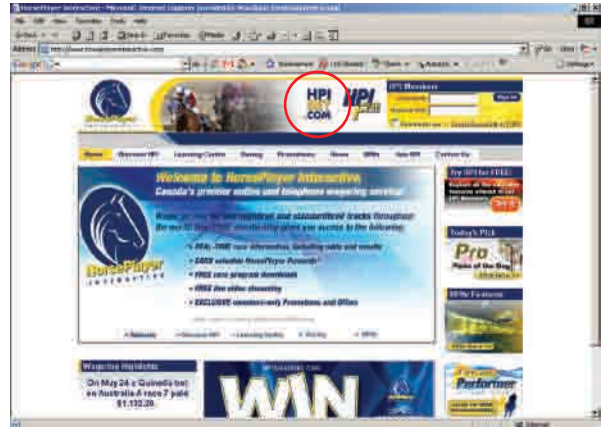
- **Faster than ever before**
- **Easy-to-use, convenient and secure**

To get started, all you need is a Microsoft Windows based personal computer, an Internet connection and Microsoft Internet Explorer (IE version 6.01 or later).

For assistance at any time, contact us at hpibet@WoodbineEntertainment.com or call 1-888/416-675-8886.

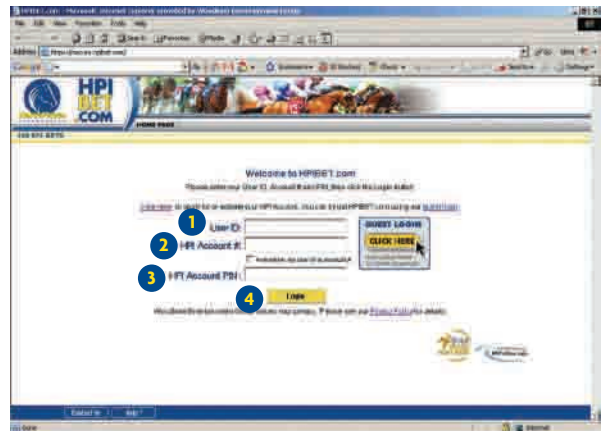
STEP ONE:

Visit www.HorsePlayerInteractive.com and click on the HPIBET.com icon.



STEP TWO:

YOU'RE READY TO LOGIN.

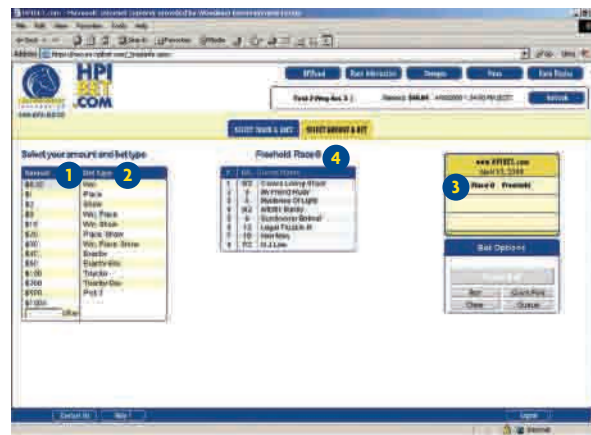
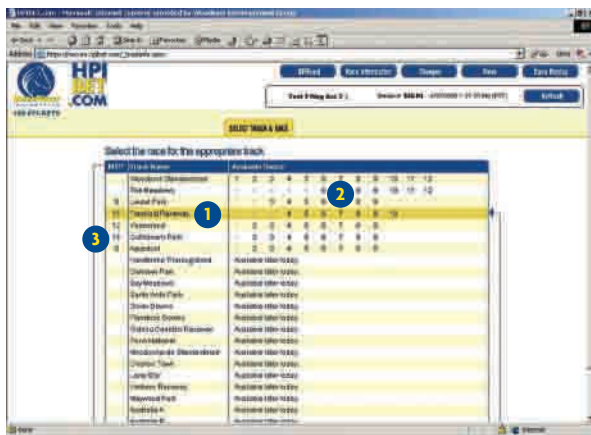


- 1 Enter your HPIBET User ID here (case sensitive)
- 2 Enter your HPI Account number here
- 3 Enter your HPI Account PIN here
- 4 Click on the LOGIN button to continue

You are now ready to compose your wager.

STEP THREE: SELECT A TRACK & RACE

STEP FOUR: SELECT A BET AMOUNT & TYPE



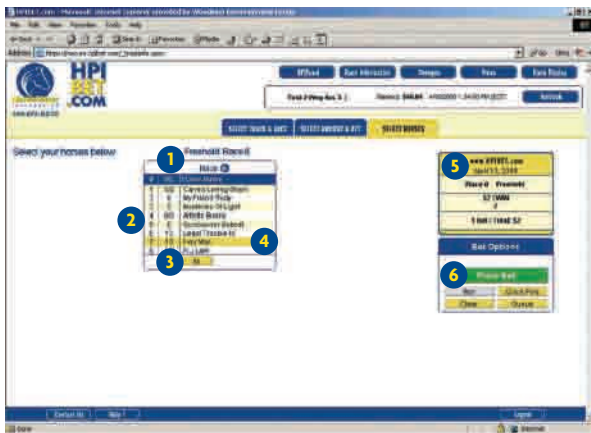
- 1 Select a racetrack
- 2 Select a race number
- 3 Shows minutes to post for next race

Once you select a race, you'll automatically be taken to the "Select Amount and Bet" page. When you return to this page, you'll see the currently selected race identified with a blue circle.

- 1 Select a bet amount from the list
- 2 Select a bet type
- 3 Shows selected track and race
- 4 Displays track and race

Once you select a bet amount and type, you'll automatically be taken to the appropriate "Select Horses" page.

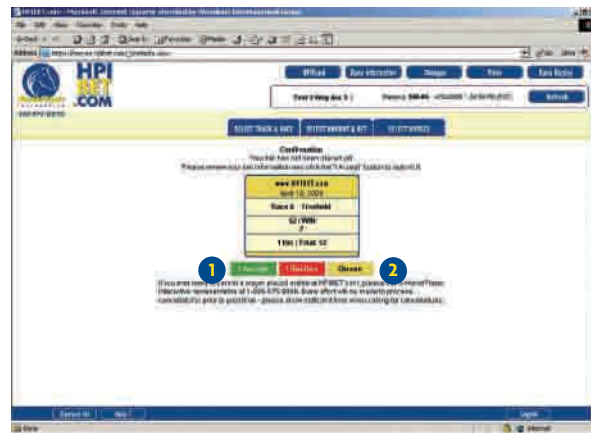
STEP FIVE: SELECT RUNNERS



- 1 Morning line or win odds
- 2 Program numbers
- 3 Select/Deselect all runners
- 4 Select/Deselect specific runners
- 5 Ticket window showing current wager
- 6 Select "Place Bet" to submit your wager

As you compose your wager the ticket window will display your selections and the total cost of your wager.

STEP SIX: PLACE YOUR BET



- 1 Confirm and submit your bet
- 2 Save your bet to the bet queue for later release

This page contains details of your wager.

Select **I Accept** to confirm and submit your wager. The following page will contain your "ticket".

Select **Print** to generate a printed copy of your "ticket".

DEPOSITS

VIA MAIL

Deposits can be mailed in the form of a personal or certified cheque or money order. In the case of personal cheques, funds will be held for a period of 15 business days for bank clearance. We strongly recommend sending a certified cheque or money order to expedite the transfer of funds to your account. Please indicate on the personal or certified cheque or money order your name and Account Number, or include a letter indicating the aforementioned information.

IN PERSON AT THE PLAYER SERVICES CENTRE/HPI WEST EXPRESS KIOSK AT WOODBINE OR HORSEPLAYER CENTRES

Funds may be deposited directly into your account in person at the Player Services Centre or HPI West Kiosk located at Woodbine. For British Columbia and Alberta residents, deposits can be made in person at the HorsePlayer Centres located at Hastings Racecourse, Fraser Downs, or Northlands Park. Immediate deposits can be made by filling out a deposit slip and making a deposit in cash, with your debit card, or with your Visa or Mastercard.

VIA TELEPHONE OR INTERNET

We accept credit card deposits from members who have pre-registered their credit cards. If you would like to receive a credit card registration form for telephone or internet deposits, please call 1-888-675-8886 or 416-675-8886 and we will mail or fax one to you. The credit card registration form can also be obtained from our website at www.HorsePlayerInteractive.com. Please note that a front and back copy of your Driver's License

must be provided in order to register a MasterCard and valid government issued photo ID is required to register a Visa card.

VIA ACCOUNT CARD

Use your Account Card and PIN # to make deposits using the self-serve terminals in the following areas: WEG¹, Alberta², B.C.³, flamboro downs⁴, Georgian Downs⁵ and Grand River Raceway⁶. Please note that Account Card functionality may differ between home market areas depending on Tote providers. For example, WEG customers cannot access their account at flamboro sites and vice versa. For more information regarding your Account Card functionality please contact a HorsePlayer Representative at 416-675-8886 or 1-888-675-8886.

VIA PARTNER TRACK DEPOSITS

Cash deposits can be made in person at many local area racetracks. The following tracks can accept cash deposits to your account: flamboro downs, Fort Erie Racetrack, Georgian Downs, Grand River Raceway, Kawartha Downs, Marquis Downs, Northlands Park, Rideau Carleton Raceway, Western Fair Raceway, Windsor Raceway, and Mohawk Racetrack. Please be advised that not all Partner Tracks are able to process withdrawals. Hours of operation vary between Partner Tracks. Partner Track deposits may take up to half an hour to process.

¹Woodbine Entertainment Group (WEG) locations include: Woodbine, Mohawk, Greenwood and GTA Champions Teletheatre locations.

²Alberta locations include: Northlands Park and Northlands OTB Teletheatres.

³B.C. locations include: Hastings Park, Fraser Downs and TBC Teletheatres.

⁴flamboro downs locations include: flamboro downs and flamboro Teletheatres.

⁵Georgian Downs locations include: Georgian Downs and Georgian Teletheatres.

⁶Grand River Raceway locations include: Grand River Raceway and Grand River Teletheatres.

WITHDRAWALS

To withdraw funds from your account you can visit any HPI Centre at Woodbine (11am to 11pm), flamboro downs (5pm-9pm), Hastings Racecourse (9am to 9pm Monday to Saturday and 9am to 8pm Sundays), Fraser Downs (Live Racing Only), Western Fair Raceway (Live Racing 5:30pm to 11pm) or Northlands Park (9:30am to last race). You must present government issued photo identification along with a signed withdrawal slip to receive your cash. Requests for withdrawals in excess of \$1000 will require 24 hours notice.

Withdrawals can be made with your Account Card at any self-serve terminal in the following areas: WEG¹, Alberta², B.C.³, flamboro downs⁴, Georgian Downs⁵ and Grand River Raceway⁶. Please note that Account Card functionality may differ between home market areas depending on Tote providers. For more information regarding your Account Card functionality please contact a HorsePlayer Representative at 416-675-8886 or 1-888-675-8886.

Vouchers can be cashed with any mutuel teller in the same tote in which the voucher was issued. Please note that vouchers exceeding \$1000CDN cannot be honoured at any Champions Teletheatre. Vouchers exceeding \$800CDN cannot be honoured at any B.C. area Teletheatre. Please redeem vouchers in excess of the amount listed above at the racetrack locations and not at a Teletheatre.

To withdraw funds from your HPI Account when you are unable to visit one of the above locations, you can send a written request which can be mailed to: HPI, 555 Rexdale Blvd., P.O. Box 156, Toronto, ON, M9W 5L2; faxed to 416-213-2130 or scanned and e-mailed to us at hpi@WoodbineEntertainment.com.

Your letter should include your name, the current date, your HPI Account number, the dollar amount for withdrawal and a signature. Please verify in your request the address you would like the cheque mailed to or the pre-registered credit card that you would like the money returned to.

We can issue a cheque for any amount over \$5 and can refund your pre-registered credit card only the amount that has been taken off your card in the past 12 months. In addition, you may ask us to keep the letter on file for any future withdrawals by telephone by including on the written request the following statement: "Please keep on file for future verbal withdrawal requests".

Requests for withdrawals via cheque will be mailed within 48-hours of receiving the request.

¹Woodbine Entertainment Group (WEG) locations include: Woodbine, Mohawk, Greenwood and GTA Champions Teletheatre locations.

²Alberta locations include: Northlands Park and Northlands OTB Teletheatres.

³B.C. locations include: Hastings Park, Fraser Downs and TBC Teletheatres.

⁴flamboro downs locations include: flamboro downs and flamboro Teletheatres.

⁵Georgian Downs locations include: Georgian Downs and Georgian Teletheatres.

⁶Grand River Raceway locations include: Grand River Raceway and Grand River Teletheatres.